



DECEMBER
2020

PREVIOUS
GRANT
RECIPIENTS

VISIT OUR
WEBSITE

CONTACT
US



Welcome!

LCHIP is very excited about the 2020 grant recipients, listed at the end of this newsletter. The eleven natural resource projects and twenty-one historic resource grant recipients are sprinkled across the state, from Pittsburg to Nashua and Portsmouth to Haverhill.

Learn more about these new grant awardees on our [website](#). A video of the announcement event with photos of each of the grant recipient projects can be seen on our [Facebook](#) page or [Zoom](#).

I am very proud and appreciative of the staff, review panels and Board of Directors for completing the complex grant review and selection process in spite of the COVID-related limitations.

I wish you safe and happy winter holidays.

Dijit Taylor
Executive Director

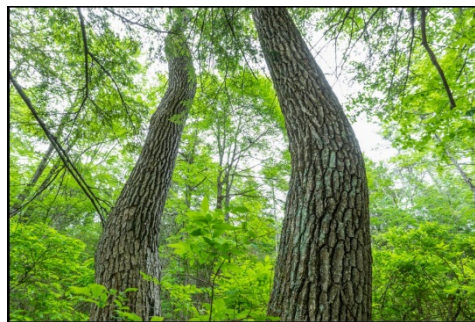
Protecting New Hampshire's Natural, Historic, and Cultural Resources

Featured 2020 Grant Recipients

Leighton Forest Barrington's hidden gem

A \$320,000 LCHIP award will assist the [Southeast Land Trust of New Hampshire](#) in creating the [Leighton Forest](#), a 407-acre forest reserve in Barrington and Strafford. The Leightons were among the early (1699) settlers in Barrington, which is one of the oldest towns in New Hampshire. Black gum trees found here predate the Leightons and have seen their share of adversity and weathered many seasons from the first European settlers to the 2020 drought.

With its diverse forest and beautiful Stonehouse Brook, Leighton Forest is a hidden gem and a critical stepping stone toward connecting Stonehouse Forest to the Isinglass River Conservation Reserve.



Majestic black gum trees with their alligator-like bark in one of the basin swamps in Leighton Forest.

*Photo Credit:
Jerry Monkman/Ecophotography*

Penhallow House Portsmouth exhibit to showcase mid-20th century Black experience

[Strawbery Banke Museum](#) in Portsmouth will receive a grant of up to \$125,000 toward the rehabilitation of the [Penhallow House](#). Built in the middle of the eighteenth century, it served as the home of Samuel Penhallow, a justice of the peace. More recently, in the 1950s, it was the home of Kenneth Richardson, the first Black supervisor at Portsmouth Naval Shipyard. The project involves rehabilitating the upper story as apartments and restoring the ground floor as museum space showcasing Richardson's occupancy. When complete, it will be the first furnished house exhibit in Portsmouth dedicated to the Black experience.



Penhallow House (c. 1750) was moved to its current location on Washington Street in 1862.

*Photo Credit:
Strawbery Banke Museum*

LCHIP Monitoring Reports Due

Please remember to submit your 2020 annual monitoring report no later than **December 31**. Email your reports to pbellemore@lchip.org (natural resources) or kpowell@lchip.org (historic resources).

Download a report form from [LCHIP's website](#). Questions? Call 224-4113.

Thank you to the many stewards who have already completed and submitted their reports.



It's time to inspect your LCHIP supported resource and submit a monitoring report!

Congratulations to all 2020 LCHIP Grant Recipients!

Barrington - Leighton Family Forest
Belmont - Gale School Study
Berlin - Maynesboro Barn
Brookfield - Moose Mountains Reserve 3
Canterbury - Canterbury Shaker Village Study
Effingham - Library/Town Hall/Masonic Hall
Epping - John Prescott Chase Farmhouse
Grafton - Kimball House and Mill
Hampton Falls - Clay Brook Forest
Hanover - Mink Brook Community Forest
Harrisville - Community Church
Haverhill - Haverhill Library
Jackson - Dundee Community Forest
Jaffrey - Jaffrey Meetinghouse
Middleton - Moose Mountains Reserve 2
Nashua - Sacred Heart School
New Durham - Birch Ridge Community Forest 2

Northfield - Stillhouse Forest 2
Northumberland - St. Pierre 1- Gray Mist Farm
Pittsburg - Pittsburg Town Hall
Portsmouth - North Church Study
Portsmouth - Strawberry Banke Museum's Penhallow House
Portsmouth - South Church
Shelburne - Shelburne Riverlands
Statewide - Preservation Planning Grants
Stratford - Stratford Grange
Tilton - Island Park Bridge Study
Tilton - Tilton Mansion
Warner - Pletcher Farm
Warren - Willing Workers Hall
Webster - Webster Meetinghouse
Wentworth - Congregational Church



The **NH Conservation License Plate (Moose Plate) Program** supports the protection of critical resources in our state. You can purchase a Moose Plate at any time - even for a friend! Find out more at mooseplate.com. Income from the Moose Plate Program pays for much of LCHIP's administrative expenses. Thanks Moose Plate holders for your support!

Header photo: Proponents of the Leighton Forest project in Barrington gather to express their appreciation of awarded LCHIP grant. Photo Credit: Duane Hyde, SELT.

