



May 2017

[Our Vision](#) [FAQ's](#) [Contact Us](#) [News/Events](#)



Welcome!

This issue of LCHIP Link focuses on projects receiving 2016 LCHIP grant awards in three of New Hampshire's cities: Claremont, Nashua and Rochester. To date, LCHIP has supported projects in twelve of the state's thirteen cities, lacking only a project in Somersworth.

LCHIP's Grant Orientation Workshops have just taken place. We eagerly await the Intent to Apply forms, due on May 19, to get a clearer idea of what kinds of projects will be seeking funding in this year's grant round.

Dijit Taylor
LCHIP Executive Director

VISIT OUR WEBSITE

LCHIP Spotlights

Sullivan Farm, Nashua

[Sullivan Farm](#), the last working farm within the state's second-largest city, Nashua, is well known and loved for its scenic apple orchards, flowering plants and fresh vegetables. Joseph Sedlewicz, grandfather of the current owner, Katherine Williams, began a dairy and vegetable operation at the location in 1911. His son, Leopold, planted apple trees along Howe Road. The orchard produces a stunning display of pink and white apple blossoms each spring. The City of Nashua and the Forest Society

will use a \$213,000 LCHIP grant to help place a conservation easement on the land supporting its ongoing agricultural use.



Sullivan Farm offers high quality, hand raised plants.

Rochester City Hall Annex, Rochester

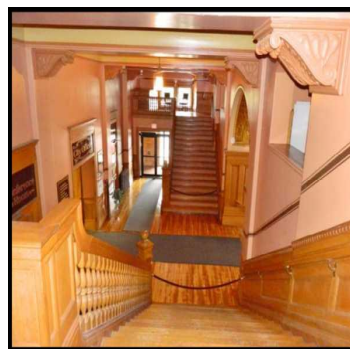
Rochester's 1904 fire station was built in the latest elaborate style, Romanesque Revival. As time passed and firefighting equipment changed, the uses of the building changed too. When it was repurposed into a police station in the 1970s, it was "modernized" with simplified windows and a veneer of less elaborate brick work. By the early 2000's, the building had been vacated and was deteriorating to an eyesore and target of vandalism. Much to their credit, leaders of the [City of Rochester](#) have re-imagined the building as a useful Annex to City Hall. The inside will be totally rebuilt as modern office space. A \$18,702 2016 LCHIP grant is helping with restoration of the original and more elegant windows and exterior brickwork.



1970's brick veneer is being removed to re-expose the original more elaborate 1904 brick exterior.

Claremont City Hall Study, Claremont

LCHIP is helping the City of Claremont with a matching grant of \$10,000 for a historic building assessment with preservation guidelines for its 1897 City Hall and Opera House. This will assist the city in setting priorities for future renovation, rehabilitation and reuse projects as well as helping to identify energy saving options compatible with the historic elements of the building. The grandeur of the building reflects Claremont's expectation at the time of the construction of City Hall/Opera House to grow from a small industrial city to a regional service and cultural center.



Two grand staircases on the first floor lead to the Opera House.

LCHIP Road Trip

Zimmerman House
Designed by Frank Lloyd Wright
Currier Museum of Art
Manchester

May is National Preservation Month, a great time to plan a visit to a favorite historic site or explore one that has always intrigued you.



*Zimmerman House, Currier Museum of Art, Manchester.
Photo credit: Currier Museum of Art*

Frank Lloyd Wright, arguably the United States' most famous architect, was born 150 years ago on June 8, 1867. Mark the anniversary by a trip to the Zimmerman House in Manchester, part of the Currier Museum of Art. It is the only Wright-designed house open to the public in all of New England. An LCHIP grant in 2012 helped improve the air quality in the building. The Currier provides guided tours of the Zimmerman House many times each week during the summer, including some tours specific to celebrating Wright's birthday in June.

Reservations are required to visit this fascinating house. Learn more at <http://currier.org/education-programs/zimmerman-house-tours/>.

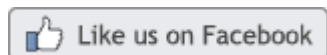
2016 LCHIP Grant Recipients

<u>Albany - Pine Hill Community Forest - Bald Hill</u>	Kensington - Bodwell Fields and Forest
<u>Alstead - Chase's Mill</u>	<u>Laconia - Belknap Mill Planning Study</u>
Ashland - Town Planning Study	<u>Laconia - Colonial Theatre</u>
<u>Barrington - Barr Conservation Easement</u>	Lebanon - Rogers House
Bath - Peters Family Farm Easement	<u>Londonderry - Expanding the Musquash</u>
<u>Belmont - Library Planning Study</u>	<u>Meredith - Page Pond Community Forest</u>
<u>Candia - Tower Hill Pond</u>	<u>Moultonborough Falls Conservation Area</u>
<u>Center Harbor - Town House</u>	Nashua - Sullivan Farm
Claremont - City Hall Planning Study	<u>New Durham - WidowMaker Farm</u>
<u>Conway - Pine Hill Community Forest</u>	Northumberland - Cape Horn Connectivity
<u>Danbury - Deuink Conservation Easement</u>	<u>Portsmouth - John Paul Jones House</u>
<u>Derry - First Parish Church</u>	<u>Portsmouth - Penhallow House Planning Study</u>
<u>Exeter - Winter Street Cemetery</u>	<u>Portsmouth - South Church Planning Study</u>
Francestown - Collins Brook Headwaters	Rochester - City Hall Annex
<u>Gilmanton - Kelley Corner Schoolhouse #1</u>	Salem - Salem Town Forest Expansion
Haverhill - Blackmount Farm	<u>Statewide - Preservation Planning Block Grant</u>
<u>Jaffrey - Meetinghouse</u>	Swanzy - Windyhurst Farm
Keene - Cheshire County Courthouse	Wakefield - Town Hall



The **NH Conservation License Plate (Moose Plate) Program** supports the protection of critical resources in our state. You can purchase a Moose Plate at any time - for your new car, for a car that's already registered, or even for a friend! Find out more at **mooseplate.com**. Income from the Moose Plate Program pays for much of LCHIP's administrative expenses. LCHIP thanks Moose Plate holders for their support!

Headline Photo: LCHIP Resource Specialist Jenna Lapachinski answers questions at the May 4th Grant Round workshop.



Land & Community Heritage Investment Program
13 West Street, Suite 3, Concord, NH 03301
Phone: 603-224-4113 | FAX: 603-224-5112

